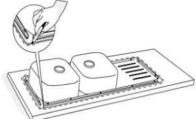
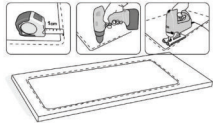


## Installation Instruction for Stainless Steel Sinks

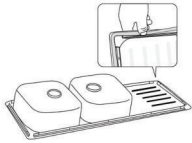
These instructions are for installing Inter Ceramic drop-in stainless steel sinks. Drop-in sinks are sinks that are installed from above the countertop and sealed to the top of the counter. Before installing the sink, inspect it for damage. Do not install a damaged unit.



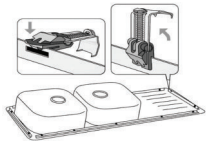
1. Place the sink upside down in the position where to be installed, and trace the outline of the sink on the counter top with a pencil.



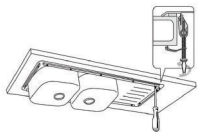
2. Draw another line 10mm inside the first line. Cut a hole in the counter top following this second, inner line /if a template is provided, then use the template to cut the hole in the counter top/



3. Adhere the seal tape around the under side of the edge of the sink, being careful to lay it smoothly /without ridges/



4. Slide or snap clips into position. Turn claws of clips towards sinks. /To clear counter top while lowering sink into cutout/



6. Tighten the screws of the anchor braces /with a hand screwdriver/, to secure the sink in place. Note: Do not fully tighten one clip at a time. Partially tighten a clip, then partially tighten the clip across from it. After each clip is partially tightened, continue the process to ensure a secure installation and avoids damages to the sink.

## Tips for Taking Care of Stainless Steel Sinks



In order to ensure that your sink remains unchanged with the passing of time and as stylish as on the first day, it is important that you follow some basic care tips to keep your sinks remain perfect condition.

1. Please clean your stainless steel sink frequently, when not in use should rinse it well and keep it dry to enhance the beauty of the surface.
2. The retention of water will cause the occurrence of mineral deposits. In this case, you can use clean water to remove it.
3. To minimize the use of soap or other cleaning products.
4. Please clean the sinks with soft sponge.

You must also remember to avoid using some products and items that may damage both the appearance and durability of your sink.

1. Chlorides: They can be found in almost all soaps and cleaning products and using them may damage the stainless steel. They are soluble in water, so if used they must be rinsed well to ensure no trace of them remains. One good weekly clean is all you need to keep your sink bright and shiny.
2. Scratches: As occurs with most metallic surface, a stainless steel sink can become scratched. In general, you don't need to worry as with the passing of time wear marks end up blending with the sink's overall finish.
3. Knife use: As using the sink as a cutting board may cause deep scratches in the surface, damaging your sink irreversibly.
4. Water Quality: Not all water are the same and some may affect the sink appearance. For example, water with high iron content may cause rust stains to appear in your sinks. More, area with high mineral concentrations may produce white stains. In order to prevent these stains from appearing, no matter how they cause, we recommend you to clean your sink weekly and keep it dry.
5. Food: It is not advisable to dry food that contain high salt levels on your sink's surface. If it occurs, rinse it carefully after use.